
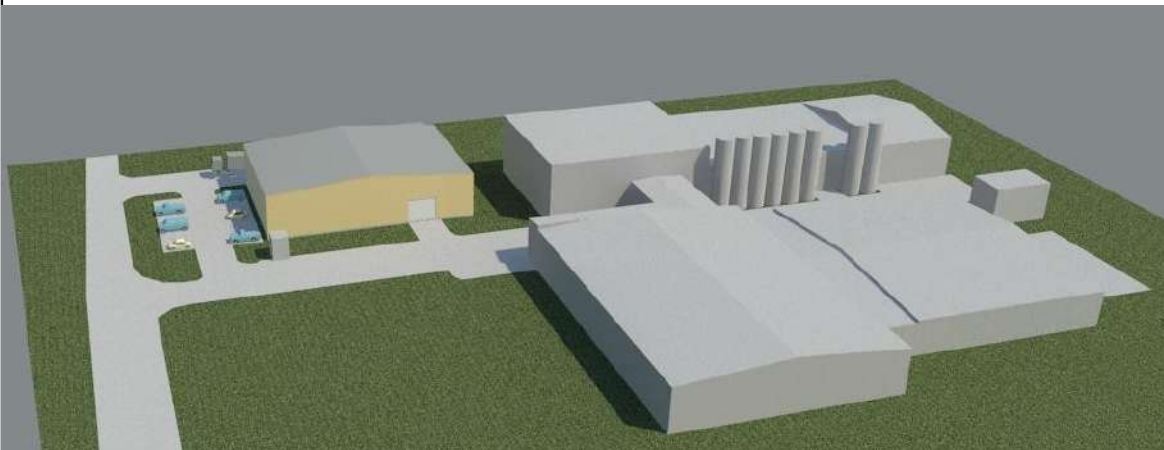


## A 3D architectural rendering of a proposed industrial facility layout. The scene shows several interconnected buildings with flat roofs, some in light gray and others in a pale yellow. A central paved area contains a parking lot with several small, stylized cars in blue and yellow, and a semi-truck. To the right, a large, multi-sectioned building with a complex roofline is visible. The entire facility is situated on a green, grassy field, with a gray sky in the background.



Atestato Nr.	UAB „AV projektavimo studija“				Sandėliavimo paskirties pastato Kauno g. 121, Žiežmarių m., Žiežmarių m.sen., Kaišiadorių r.sav. naujos statybos projektas		
A797	PV	V.Stalaučinskas		2020-05	Vaizdine informacija		Laida
				0			
PP	Statytojas: UAB „Eckes-Granini Lietuva“				0610-01-TP-PP	Lapas	Lapų
						1	2

## . PROJEKTINIŲ PASIŪLYMŲ VAIZDINĖ INFORMACIJA



0610-01-TP-PP

Lapas

2

Lapų

2

Laida

0